

Wonpro®

Specification Recognition

Customer (客户名稱)	Spec.No. (承認書編號)	Version (版本)	Model Number (型號)	Rated (額定)	Insulated Voltage Proof (耐壓)
Prod.Series (系列名稱)	WE-4A Series (WE-4A 系列)	VER: A1 2024.06.12	WE-4A.6R4- I-C14	13A 250V~	2KV

Main Material (主要材质)

NO.	Parts Name (細部名稱)	Material (材質)	Specification (規格)	Remark (備注)
1.	shell 外殼	ABS	ABS	
2.	Socket 插座	PC	PC	
3.	L/N/E-Terminal L/N/E-端子	Phosphor copper 磷銅	Qsn6.5-0.1	
4.	No Fuse Breaker 無熔絲斷路器	FF001	15A/125V 15A/250V	
5.				
6.				

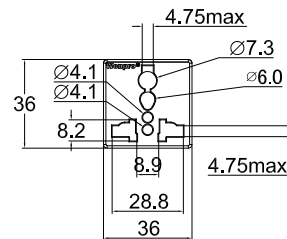
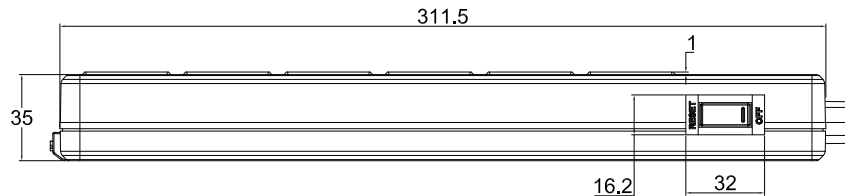
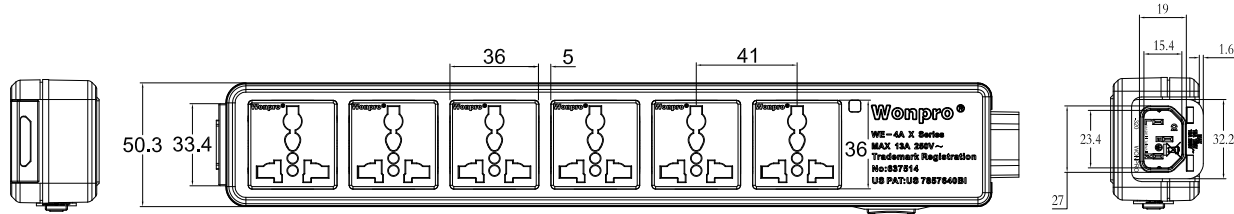
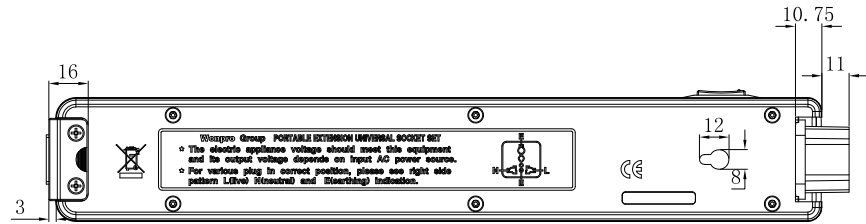
Per Packing Case (每一包裝外箱)

Packing Mode (包裝方式)	Q'TY (數量)	N.W. (淨重)	G.W. (毛重)	CUFT (材積)
Box: pcs/box (盒裝: 个/盒)				
Box/Carton (盒/箱)				
storage conditions (儲存條件)	In the normal indoor temperature(-5~40° C) 一般室內环境温度(-5~40° C)		relative humidity(RH):20%~70% 相對濕度(20%~70%)	

Caution (注意事項)

- IT DOSE NOT PERFORM VOLTAGE STEP-UP OR STEP-DOWN CONVERSION BETWEEN 125V AND 250V.
(本產品無電壓轉換之功能)
- WHEN USE,PLEASE CHECK AND ENSURE YOUR ELECTRONICS APPARATUS CAN WORK WITH THE LOCAL VOLTAGE.
(使用本產品時,請確認你的電器產品是否適用於當地電壓)
- WHEN MARK WITH INPUT 100V-240V,IT CAN BE USED ON THE RECHARGER LIKE PORTABLE COMPUTER,MOBILE PHONE & DIGITAL CAMERA.NO NECESS SELECT THE VOLTAGE.
一般常用之手提電腦行動電話,數字相機之充電器若有標示INPUT 100V-240V即可使用,無需選擇電壓
- WHEN DO NOT USE,PLEASE TAKE OFF AND DO NOT STAY ON THE RECEPTACLE FOR SAFE PURPOSE.
(不使用時請勿將產品留在插座上,以確保安全)

Manufacturer : Wonpro CO,LTD.
PRO1(XIAMEN)CO.,LTD.
Address :3/F, 3rd Building, No. 1 886 Jixing Road,
Tong'an Industry Zone, Xiamen, Fujian 361 100, China
Web Site :www.xm-pro1.com
製造商: 梵輔路有限公司
普羅萬電子科技(廈門)有限公司
地址: 86-592-5635050 傳真: 86- 592-5635500
網址: www.xm-pro1.com
地址: 福建省廈門市同安區工業集中區集興路1886號3號樓3樓361100



± 0.5

Model Number (型號)	WE-4A.6R4- I-C14	Description (品名)	Universal Multi-Outlet Extension Set (6 Receptacles) (萬用多功能延長纜組-6插孔)	Safety Certification	Quality Certification
Suitable for Area (適用國家)		Universal (世界通用)		CE	afaq ISO 9001 Quality

制圖

刘剑升

審核

李衍书

批准